



Pathways to water resilient South African cities (PaWR)

Fulham Road, Mitchell's Plain 2022



The Pathways to water resilient South African cities (PaWS) research project is looking at how stormwater ponds, like this one, can be used to provide a beautiful, useful space for local residents, while also serving to prevent flooding and filter water into the Cape Flats Aquifer that lies beneath.

A LIVING, BREATHING POND

This stormwater pond is a living, breathing space. Water enters the pond from the neighborhood stormwater drain catchment and flows into the infiltration trench in front of the inlets. This slows down the water so that it can flow through sand and the natural vegetation so that it is cleaned and filtered before reaching the outlet. This pond lies within the critically endangered Cape Flats Dune Strandveld vegetation type, that occurs nowhere else in the world. It also supports a number of mammal, bird, amphibian and insect species that contribute to a living ecosystem.



The wall mural was a collaborative process with local residents, facilitated by CareCreative and HC360, and depicts the flow of water and natural aspects of the area.

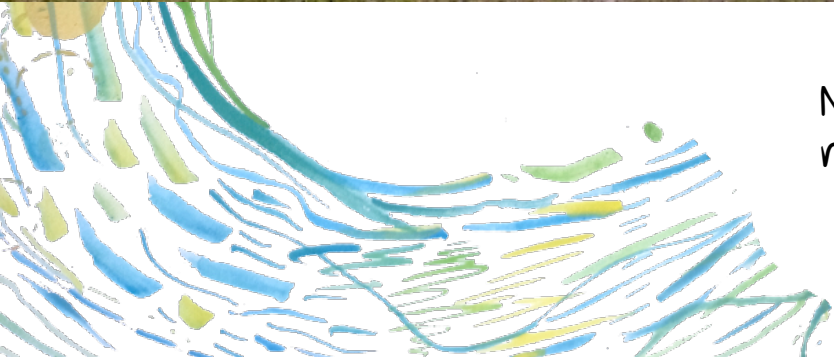
For more information on the project and the research that is underway, please refer to the QR code



The Mural process begins with a site Visit:
understanding the pond & its surroundings



Nature-based solutions, like stormwater retention ponds, can provide options for managing excess rainfall, and also be useful spaces to local residents.



Greeting the Land & Water



Acknowledging the ancient-ness of the ground under us and how it came to be. Who walked here before us? Who are the custodians of its future?





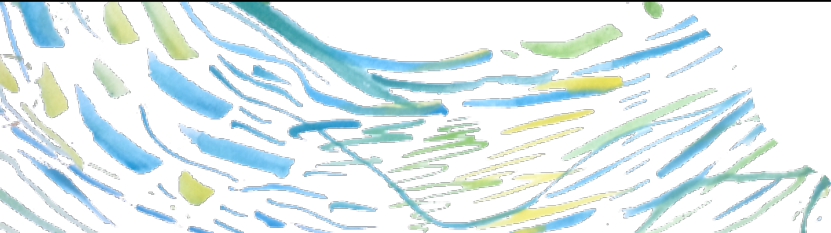
Noticing the plants and creatures

Painting begins:

ProNature Eco-friendly Wall paint 'greens' our walls as an undercoat.

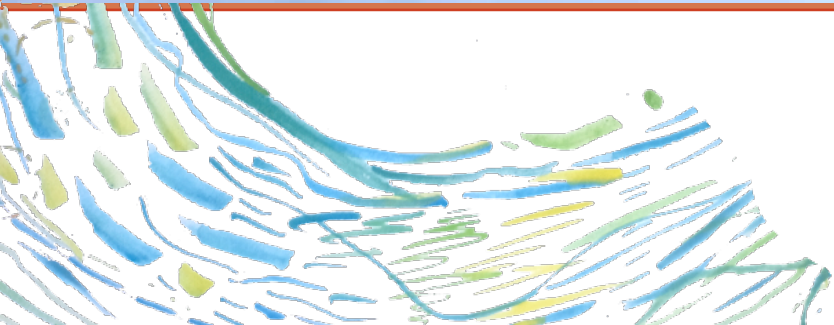
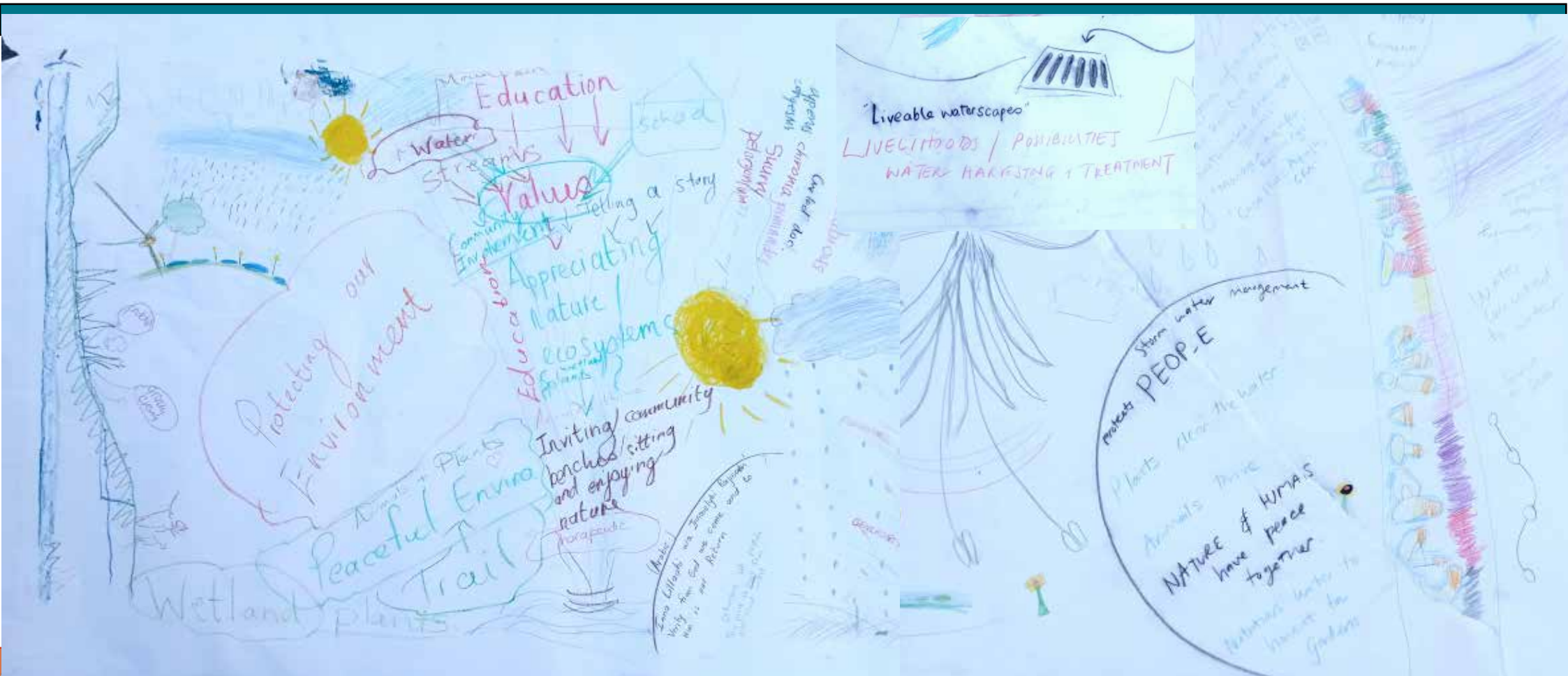


Community Workshop 7 May 2022: Participants including teachers from the adjacent school, Community members, researchers, engineers, landscape architect, artists and neighbors whose walls would be painted.



Ideas were bouncing, sketches were made. Depictions of ideas and what was important to include in the mural. We had fun together and finished off the green undercoat.

Mural Ideas & conversations

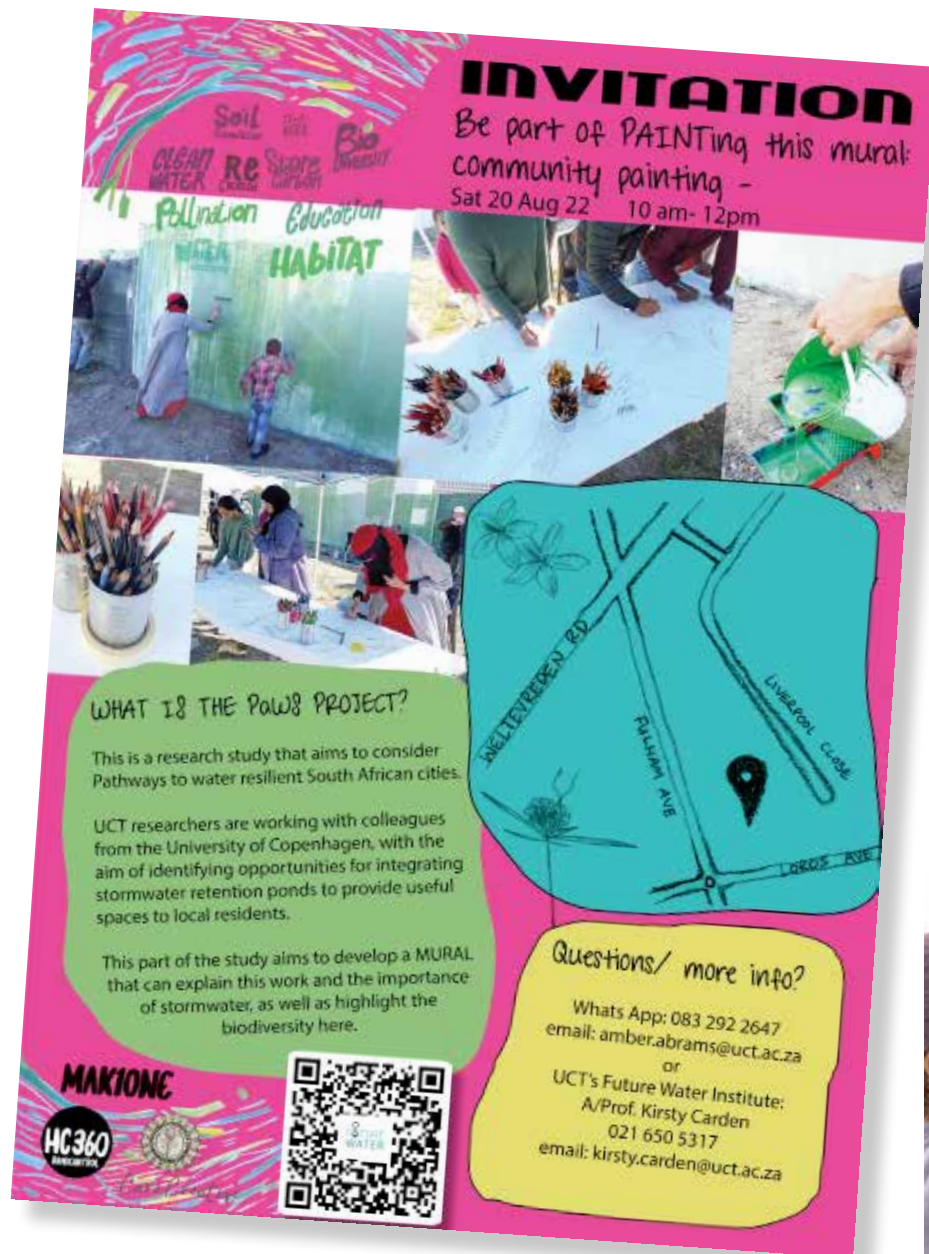


Mural Design:

Artists of the HC360 Crew continued to develop the ideas into a mural design that could be submitted to the City of Cape Town for a Public Art Permit.



Community Painting Day: 20 Aug 22



INVITATION
Be part of PAINTING this mural:
community painting -
Sat 20 Aug 22 10 am- 12pm

WHAT IS THE PAWS PROJECT?
This is a research study that aims to consider Pathways to water resilient South African cities.

UCT researchers are working with colleagues from the University of Copenhagen, with the aim of identifying opportunities for integrating stormwater retention ponds to provide useful spaces to local residents.

This part of the study aims to develop a MURAL that can explain this work and the importance of stormwater, as well as highlight the biodiversity here.

Questions/ more info?
Whats App: 083 292 2647
email: amber.abrams@uct.ac.za
or
UCT's Future Water Institute:
A/Prof. Kirsty Carden
021 650 5317
email: kirsty.carden@uct.ac.za

MAK10NE
HC360
WATER

Map: The map shows the intersection of Weltevreden Rd, Fickham Ave, and Linderhof Close, with a location pin at the intersection of Fickham Ave and Linderhof Close.

Activities: The poster includes images of people painting a mural, a table with paint supplies, and a QR code.





Artwork completed by the HC360 Crew:



@onemak1
@carecreative...
@urbanhoisoldier
@dfeatonce



Brought together by their shared love of graffiti art and ethos, the HandControl360 Graffiti Art Crew came into existence in 2017. Since then, their skills have kept growing as they learn from and share with each other. Together they have completed many murals that bring not only colour to communities, but provide thought provoking content that touches on heritage, sustainability, climate change and more.

HC360 has enjoyed developing a participatory based approach to painting this site and working with the UCT Future Water research institute to co-create an inspired piece of Graffiti Art aiming to spark interest in the space, arts-based community interaction and nature potential.







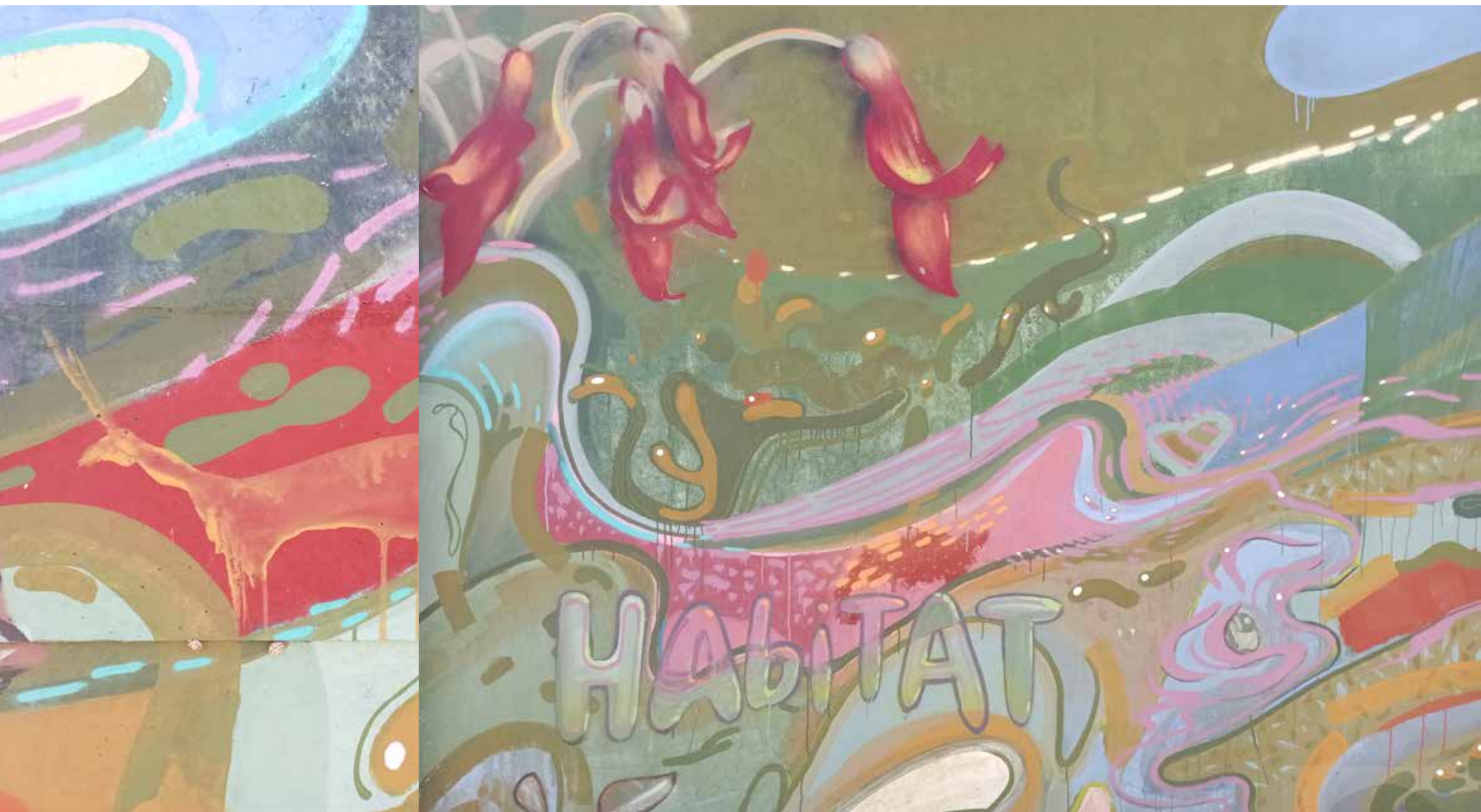




The experience of the painting takes the viewer on a journey of water through our urban environment. There are so many details to explore with many handmarks made by many different people.







Project Launch Day: 26 Nov 22

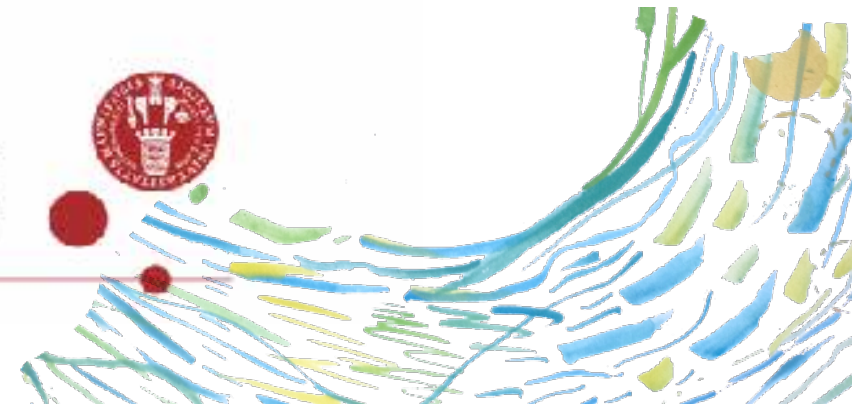


'Pathways to water resilient South African cities' project - a collaboration between the Universities of Cape Town and Copenhagen, funded by DANIDA MFA



FUTURE
WATER

UNIVERSITY OF
COPENHAGEN





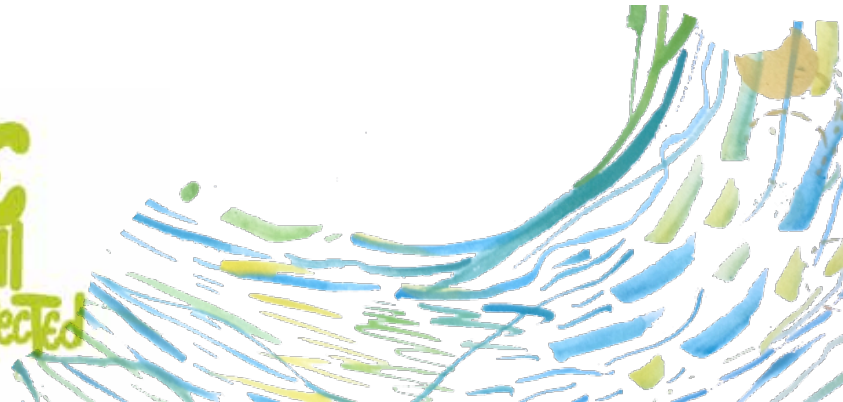
Film Soundtrack by

the self we share
- Felix Prater

Featuring the mouth bow by B'ia Kingsley, Gorachouqua Tribe
and the chorus of pond frogs recorded on site.



WE
ARE ALL
CONNECTED



Film & mural project
facilitated by



Care Creative

with big
thank you's to

Amara
OLUNTU



MAK1ONE



Eco Paint by

ProNature
It's time.
Let's paint a greener future!

