



Blue-green acupuncture:

A Blue-Green (resilience-focused) Infrastructure strategy for Cape Town's stormwater ponds



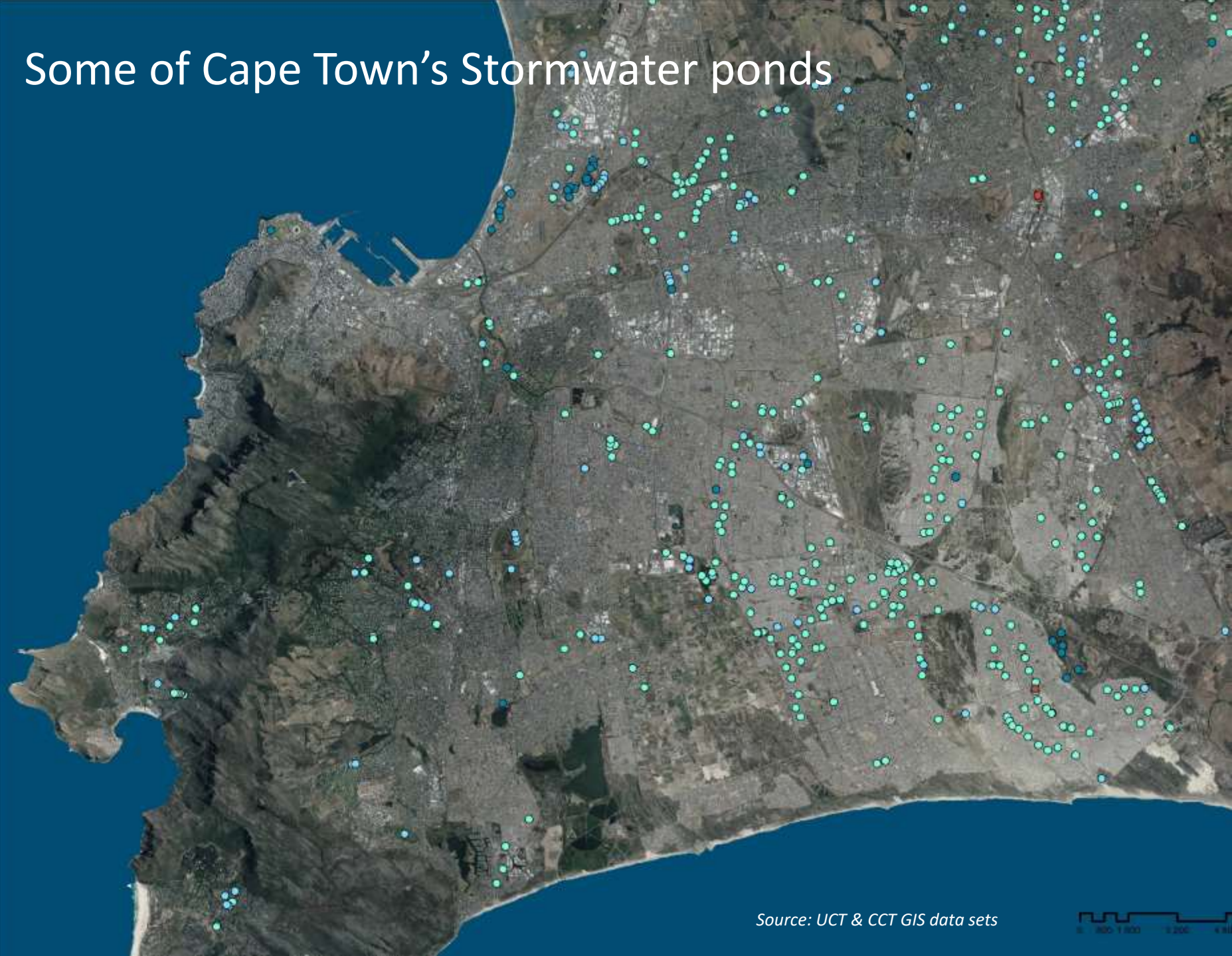
UCT African Centre for Cities
African Infrastructure Futures Conference
21-23 November 2022



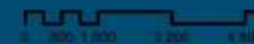


Source image: iucn.org

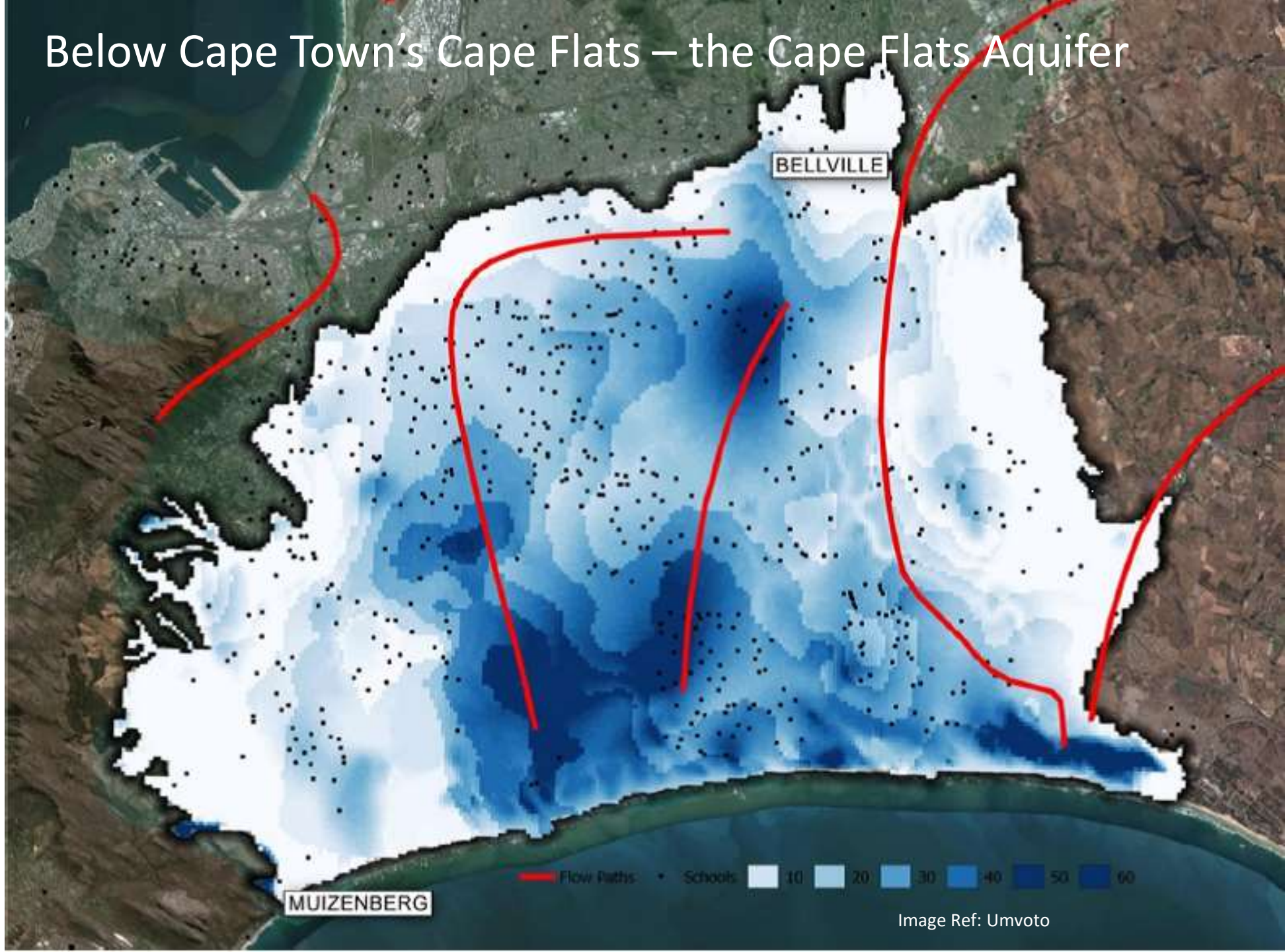
Some of Cape Town's Stormwater ponds



Source: UCT & CCT GIS data sets



Below Cape Town's Cape Flats – the Cape Flats Aquifer





Sydney Water Re-use Park, Sydney, Aus. by Turf Design Studio



Kallang River Bishan Park, Singapore, Ramboll Studio Dreiseitl

Search: e.g. 2 Gie road or Delft library



OS2 Public Open Space 2

PRIMARY USES - Public open space and environmental conservation use

CONSENT USES - includes Environmental facilities, tourist facilities, utility service, cemetery, rooftop base, telecom station, freestanding base telecommunication station, wind turbine infrastructure, cultural and social ceremonies, urban agriculture, informal trading, harvesting of natural resources and air and underground rights

Cape Town, Western Cape

Google

Street View - Mar 2022



Google

Cape Town, Western Cape

Google

Street View - Apr 2022



Google

Natural systems (simplified)

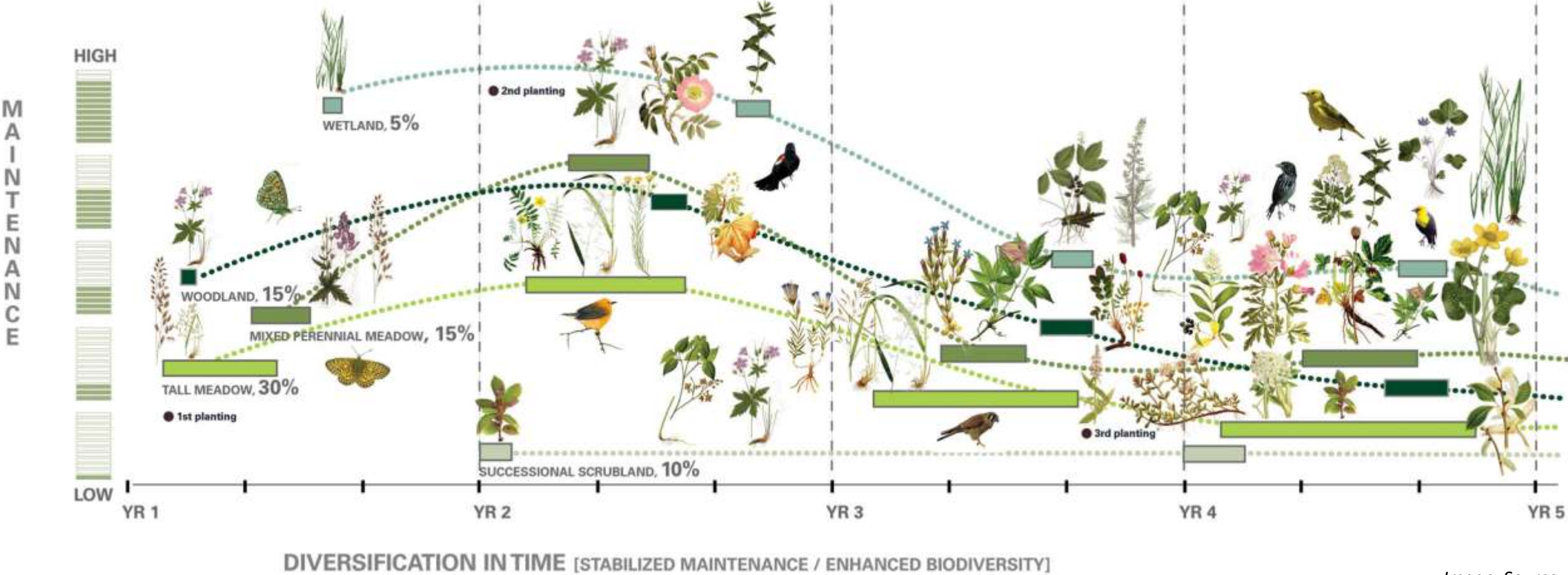


Image Source:
James Corner Field Operations: the Hi-Line, New York

Cities - Urban systems, Cultural systems, Spatial systems

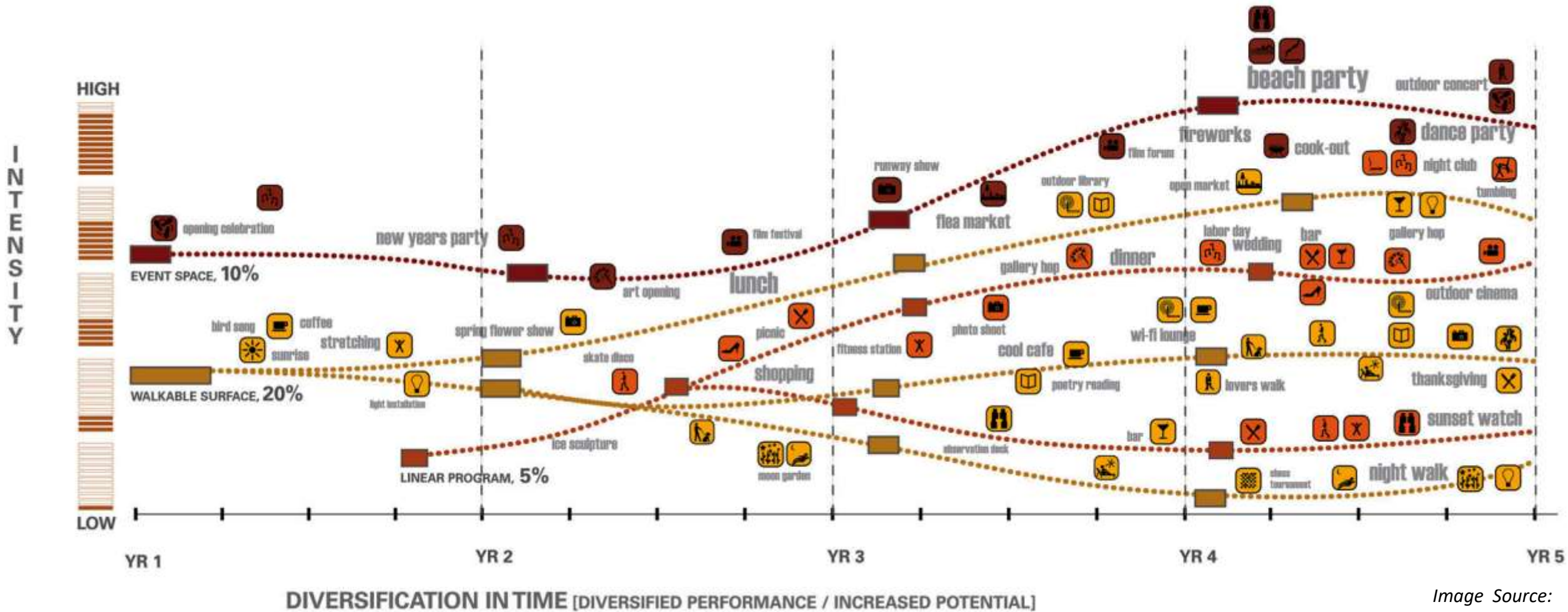
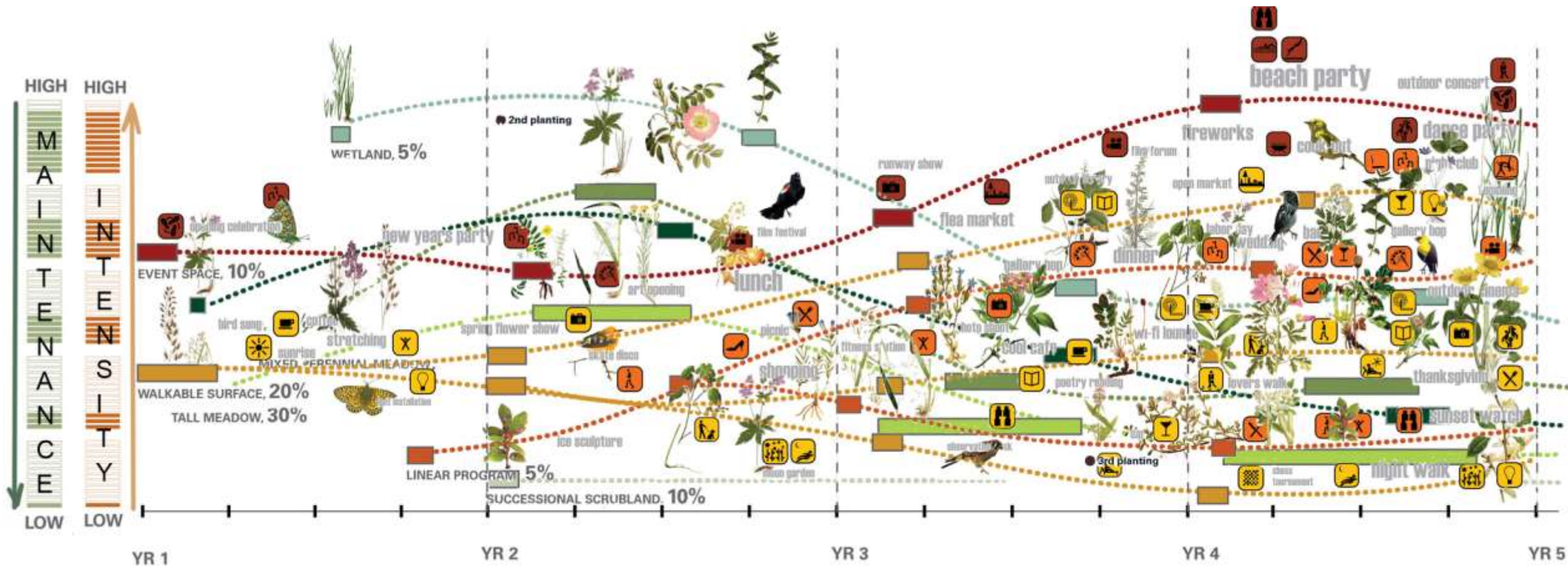


Image Source:
James Corner Field Operations: the Hi-Line, New York

IMAGINING - 'BLUE-GREEN ACUPUNCTURE' in space



DIVERSIFICATION IN TIME [DIVERSIFIED PERFORMANCE / INCREASED POTENTIAL]

Adapted from Image Source:
James Corner Field Operations: the Hi-Line, New York





0 15 30 60 90 120 Meters

April 2019



March 2021



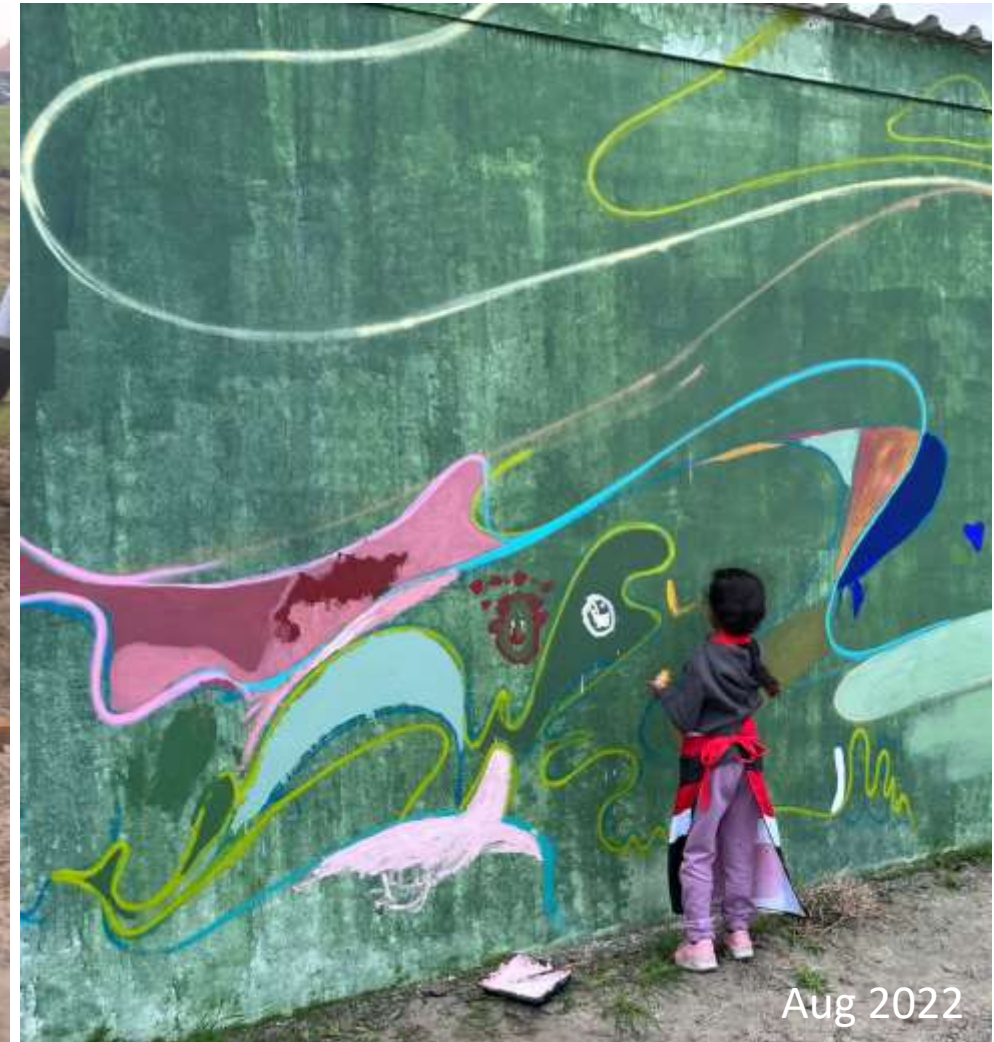
Aug-2021 - Local residents employed to construct infiltration trench and green wall



resident-workers observed wildlife at the pond



Local schoolchildren, residents involved in Spring Planting Day, Wall Mural painting activities



June 2022



FROM MOWING.....TO GROWING...



Sept 2020....mowed



Jul 2021 mowed

..... GROWING IN BIODIVERSITY, NATURE LEARNING, RECREATION....



Jan 2022



SEPTEMBER 2020
Recently mowed, monoculture prevalent



SEPTEMBER 2021
Green weir wall complete, Nature observations; Spring planting day with schools



NOVEMBER 2021
A living wall growing; schoolkids collecting litter; Water monitoring with school kids watching



JANUARY 2022
Naturally-occurring seasonal flowers; Residents protecting small planted trees



MARCH 2022
Cooler days, wet and marginal zones left unmowed to grow. *C. edulis* at street verge Dry zone



APRIL-MAY 2022
Sept 2021 Spring Day plants showing their colours



Biodiversity Feature Garden

Learning Path with signage

Scattered Daisies for seasonal effect
(hoping Grow don't Mow is followed)

Water-biodiversity-related signage

IMG_4466 Curating the pond landscape to 'speak'

00:00:03

00:00:18

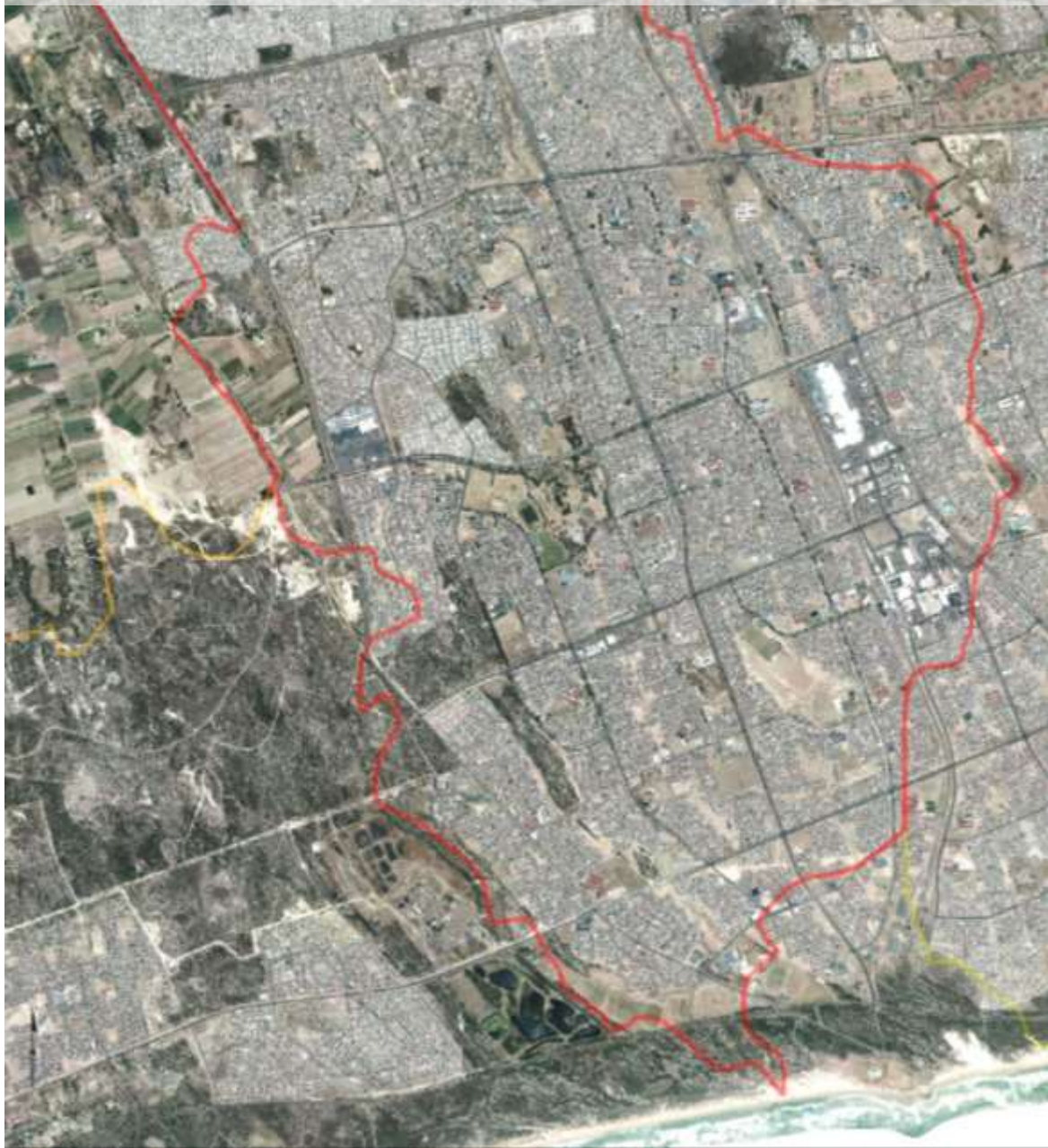
10 30

Speaker icon, Comment icon, Volume icon, Play/Pause icon, Speed icon, Edit icon, Share icon, More options icon



Looking to further explore local knowledge, seasonal plant interest, nature learning, traditional knowledge, etc.

What about the potential spatial opportunities these ponds could provide?



Could we re-imagine Blue-Green Acupuncture as *Spatial systems of resilience*?

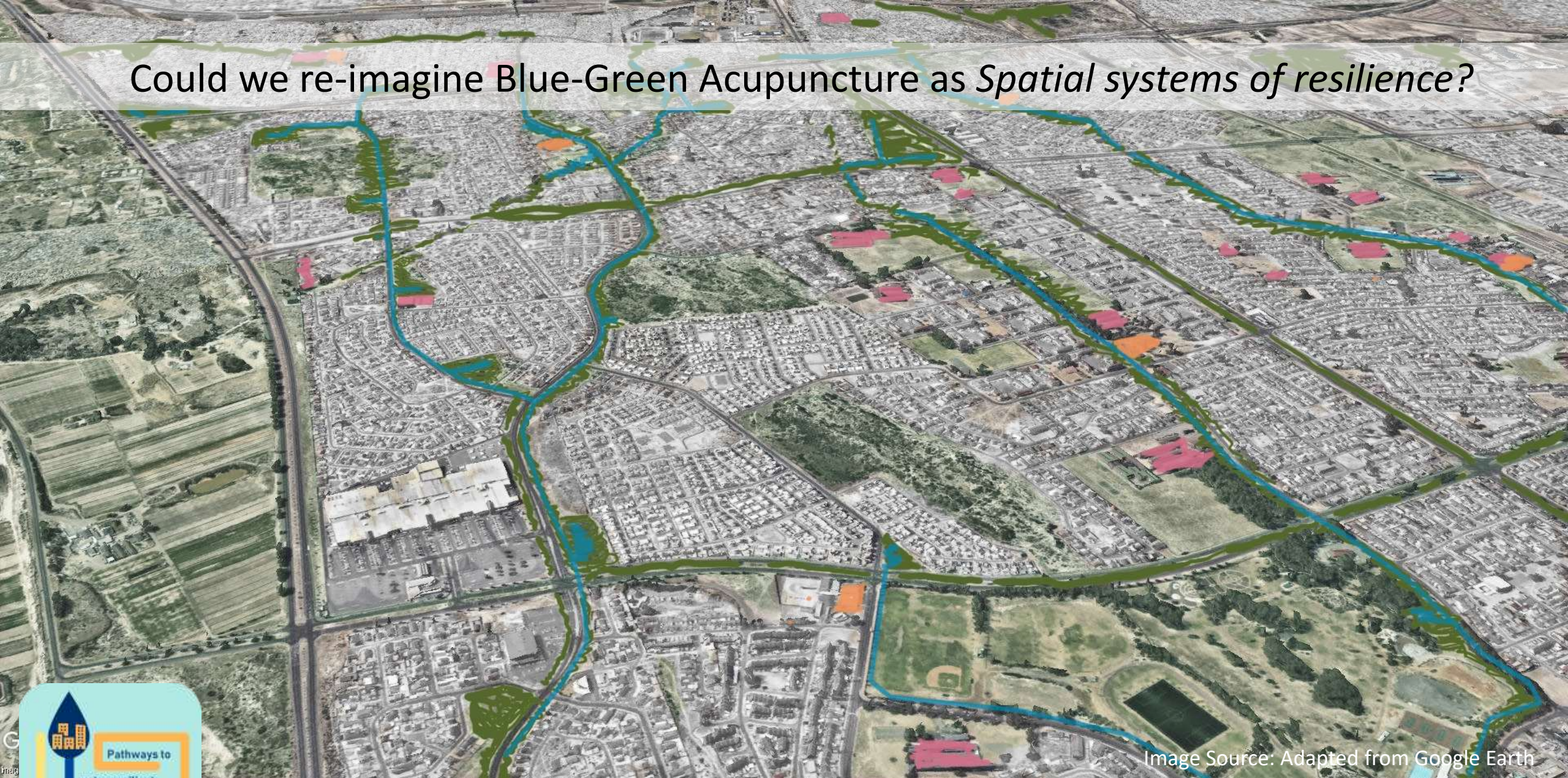


Image Source: Adapted from Google Earth



UNIVERSITY OF COPENHAGEN



MINISTRY OF FOREIGN AFFAIRS OF DENMARK
DANIDA | INTERNATIONAL DEVELOPMENT COOPERATION