

# #COCREATE BLUE-GREEN CITIES DESIGN AWARDS

2022



# Pathways to Water Resilient South African Cities - Urban MAR In Retrofitted Infiltration Basins

*Craig T. Tanyanyiwa & Rachelle Schneuwly - Future Water Research Institute*

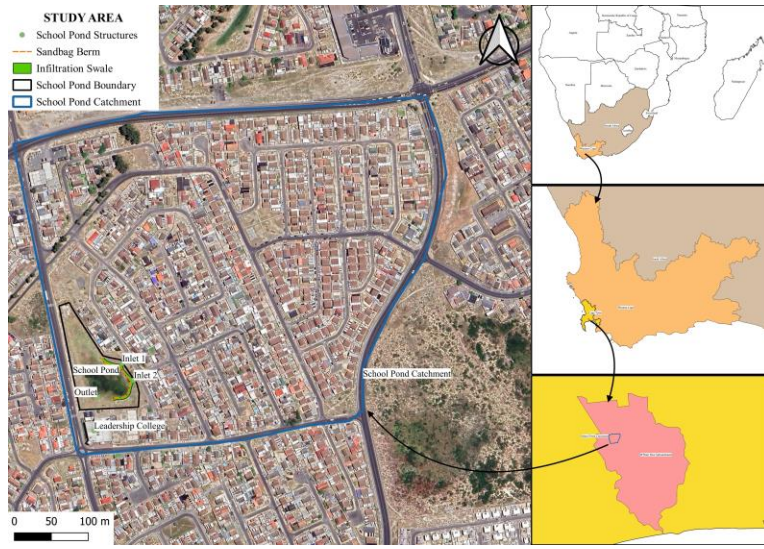
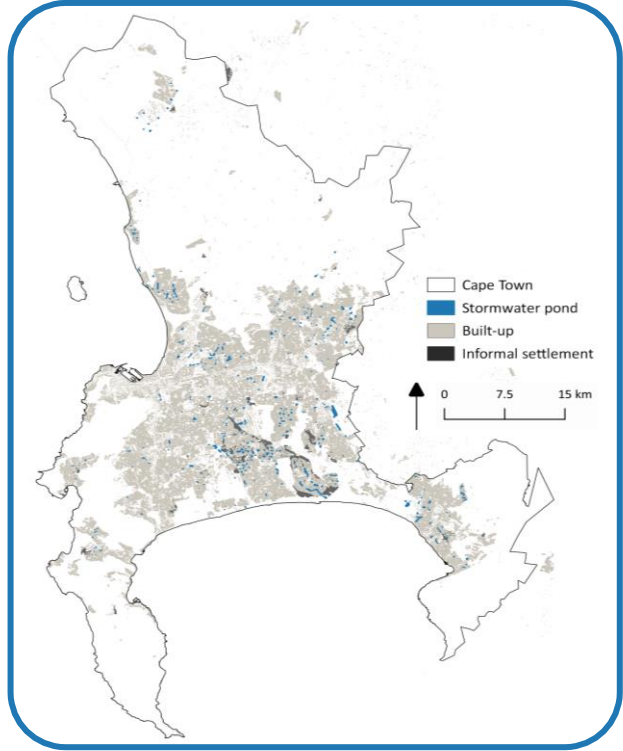




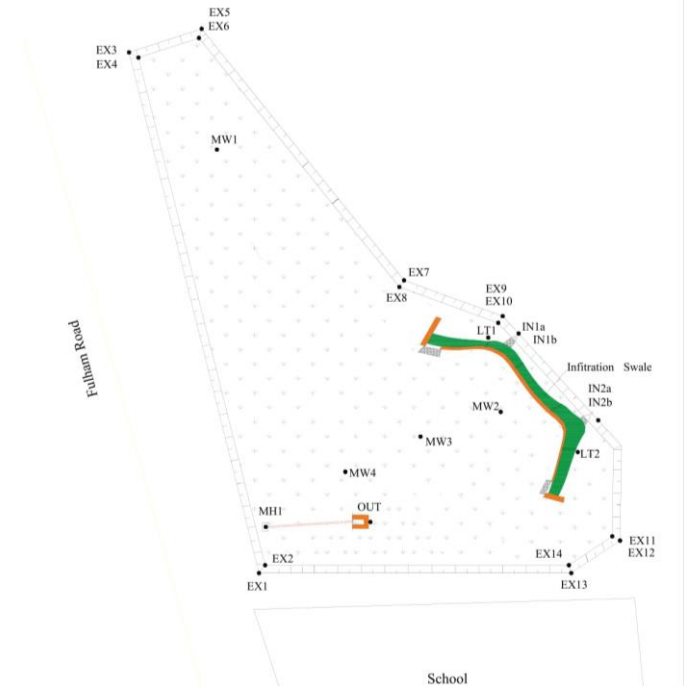
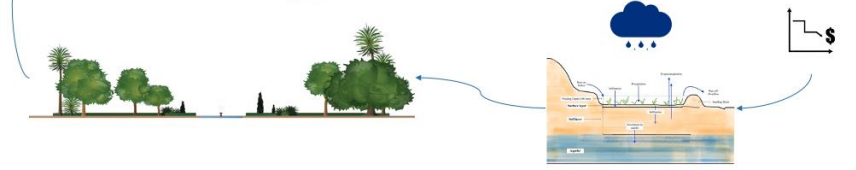
# OUR SHARED WATER FUTURE

CAPE TOWN'S WATER STRATEGY

Making progress possible. Together.



- Redesign pond to promote infiltration
- Low-cost designs and interventions
- Use paid local labour
- Extend amenity and biodiversity
- Engage with local residents at every step





## Key Findings

1. Low-cost retrofitting is possible but requires residents' consent and input
2. #Co-Design, #Co-Implement, #Co-Maintain
3. High water table is a technical challenge
4. Retrofit can increase infiltration by 15 %
5. Future scenarios result in more SWH (110%)
6. Even 0.5m of soil can remove > 76% of metals and Phosphorus
7. Retrofitted ponds can improve groundwater quality



**Total retrofit cost: R300 000**  
 Engagement: R10 000  
 Retrofit Design: R39 000  
 Materials: R49 000  
 Labour & PPE: R42 000  
 Monitoring Wells: R68 000  
 Topographical Surveys: R49 000  
 Other: R43 000



Inlet 1

Inlet 2

#COCREATE DESIGN FESTIVAL

the CRAFT + DESIGN INSTITUTE  
not profit company

HOW CAN WE #COCREATESANL  
The Netherlands & You

CAPE TOWN city of design

F&TURE WATER

CITY OF CAPE TOWN ISIXEKO SASEKAPA STAD KAAPSTAD

ILASA Institute for Landscape Architecture in South Africa