



Never let a good crisis go to waste

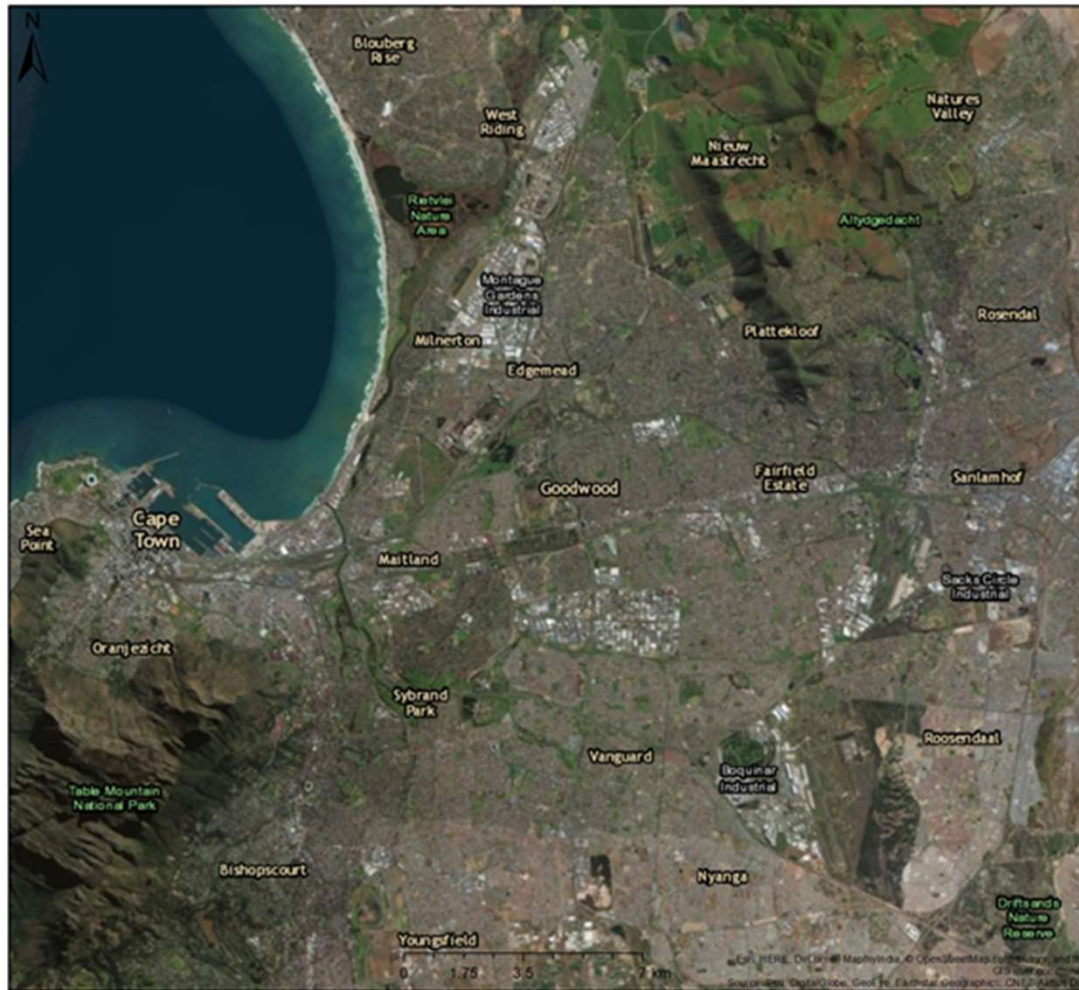
— *Winston Churchill* —

AZ QUOTES



Intaba movie





Cape Town

Scale: 1:144 448
 Date created: February 17, 2018

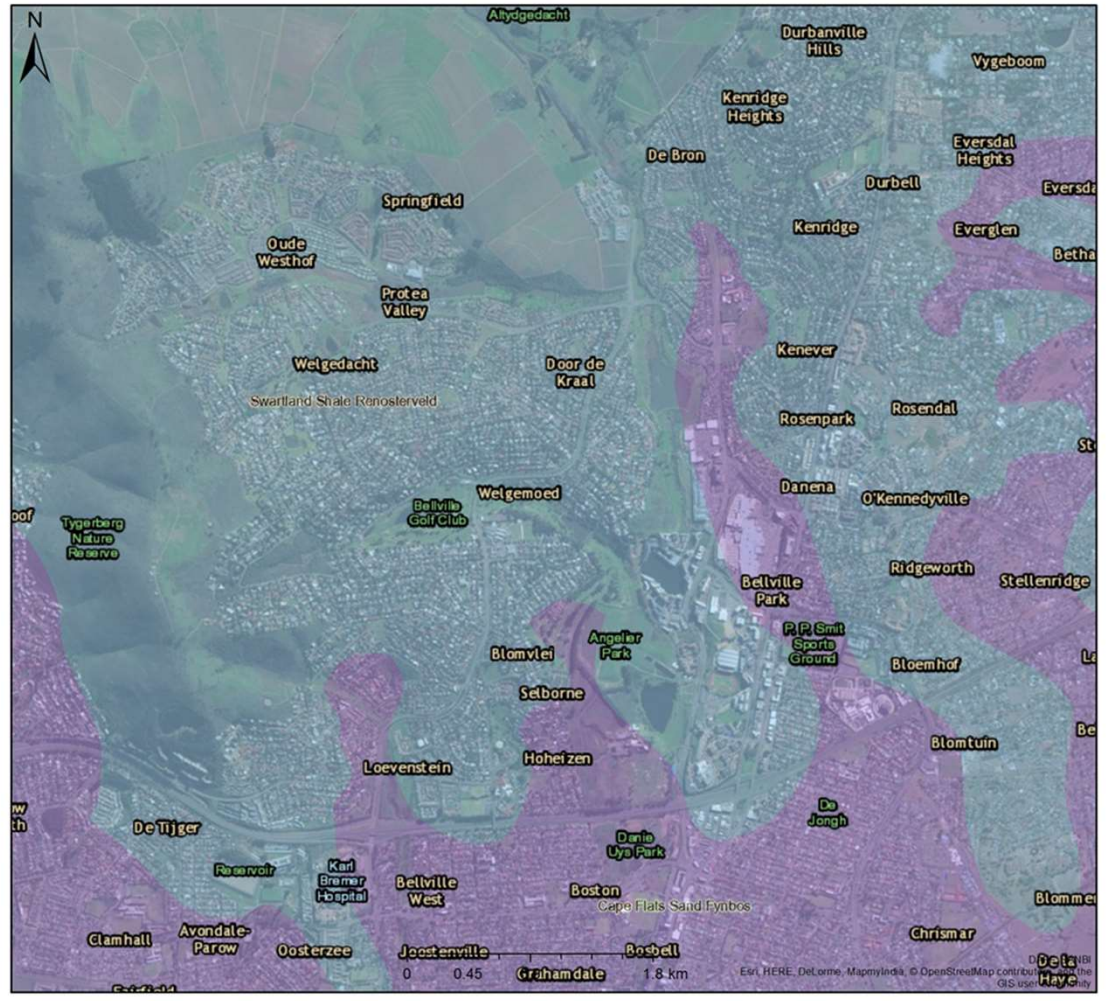




Cape Town map

Scale: 1:36 112
Date created: February 17, 2018



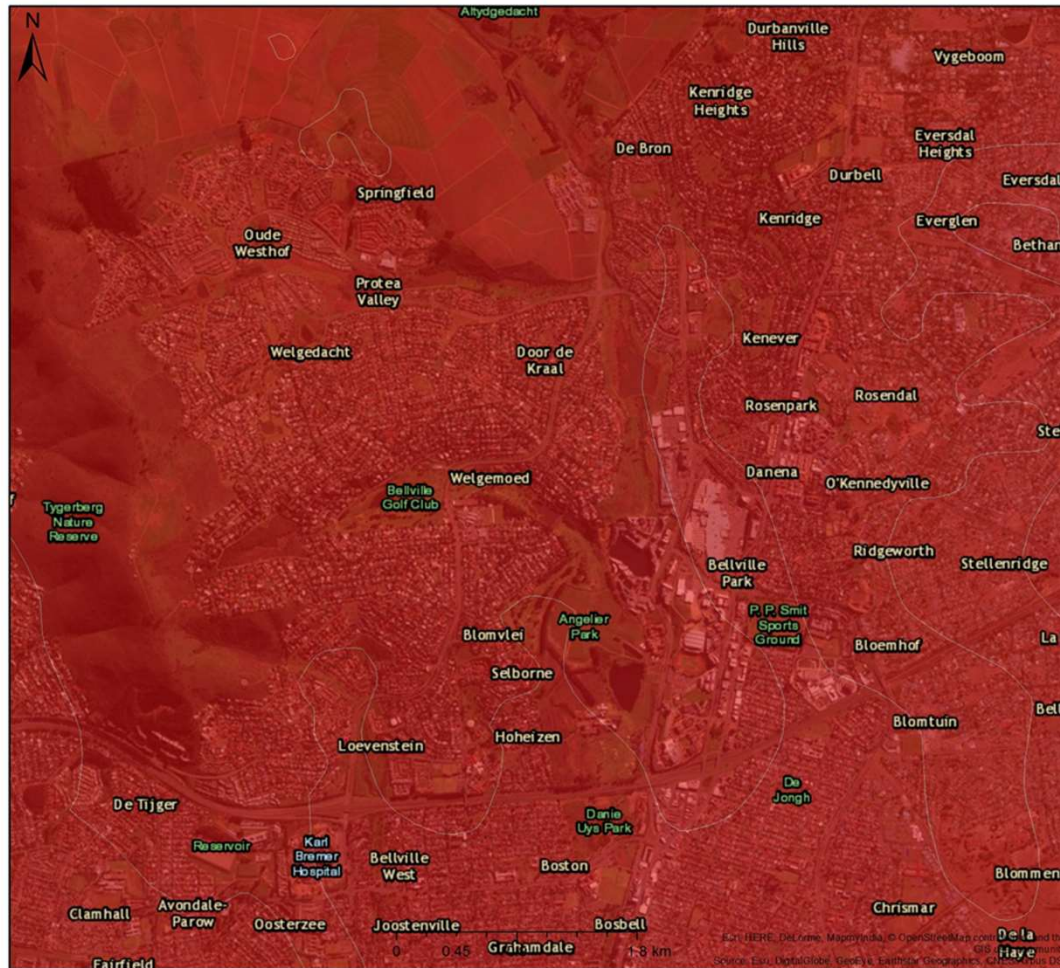


Cape Town Veg map zoom

Scale: 1:36 112
 Date created: February 17, 2018



Esri, HERE, DeLorme, MapmyIndia, © OpenStreetMap contributors, and the GIS user community



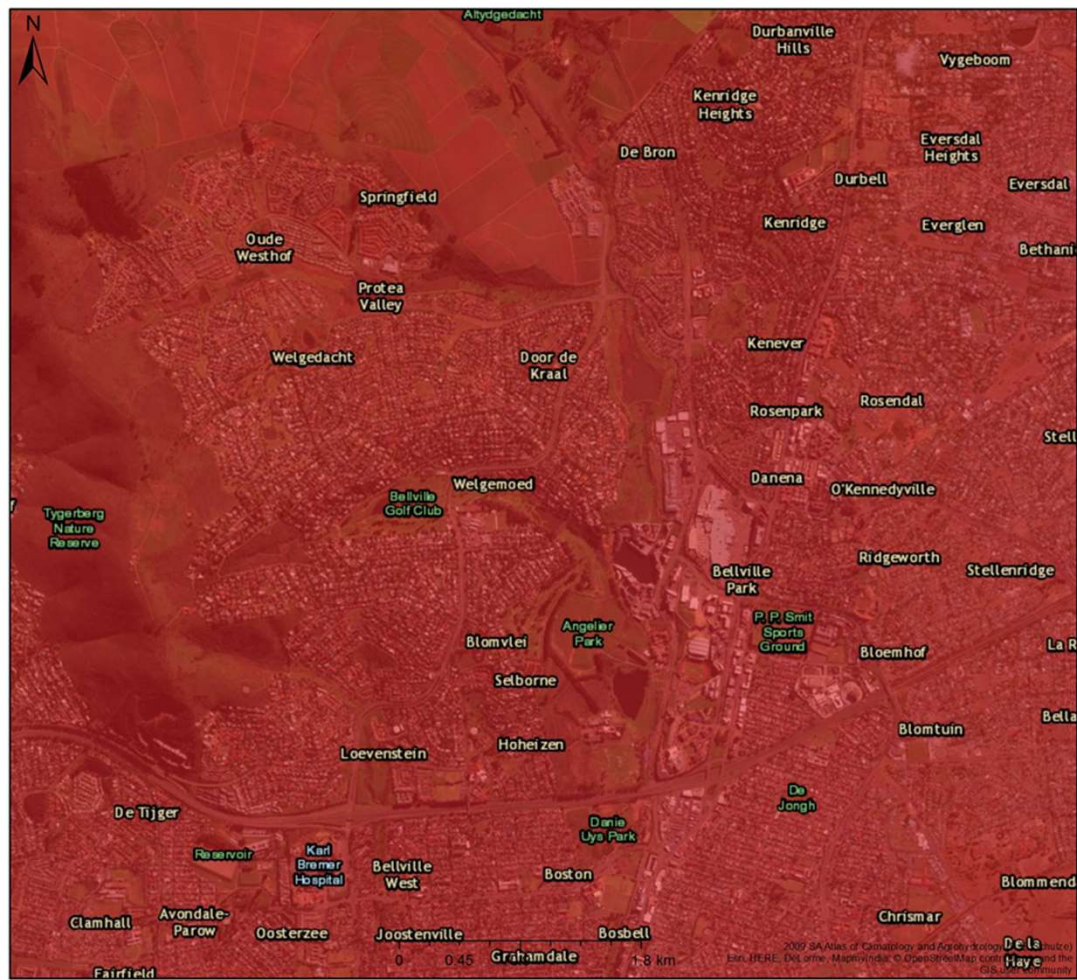
Cape Town map

Legend

Ecosystem Threat Status 2016

- CR
- CR (A1 and D1)
- CR (D1)
- EN
- EN (A1 and D1)
- EN (C)
- EN (D1)
- LT
- NA
- VU
- VU (A1 and D1)
- VU (D1)





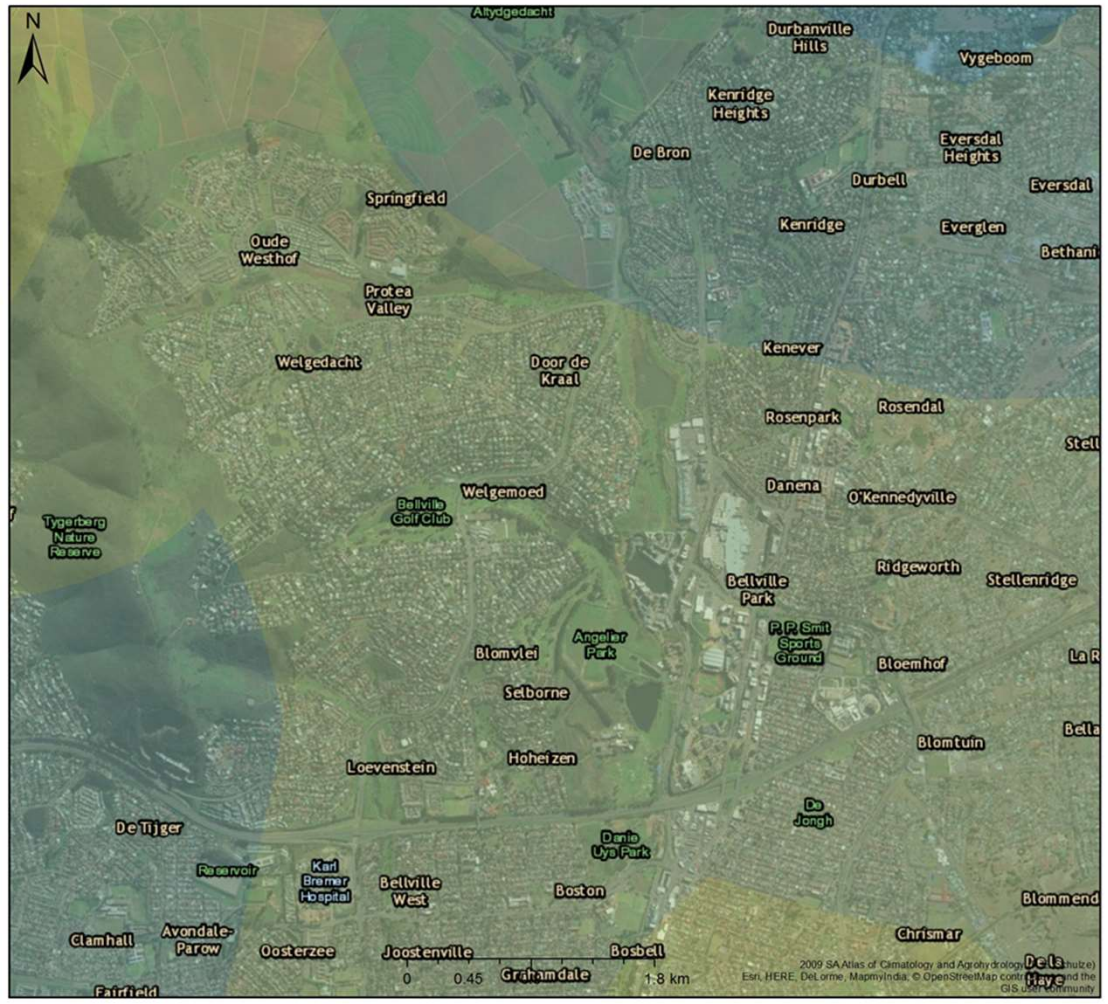
Rain in Feb

Legend

- < 10
- 10 - 20
- 20 - 30
- 30 - 40
- 40 - 50
- 50 - 60
- 60 - 70
- 70 - 80
- 80 - 90
- 90 - 100
- 100 - 200
- > 200

Scale: 1:36 112
 Date created: February 17, 2018





Rain in June

Legend

- < 10
- 10 - 20
- 20 - 30
- 30 - 40
- 40 - 50
- 50 - 60
- 60 - 70
- 70 - 80
- 80 - 90
- 90 - 100
- 100 - 200
- > 200

Scale: 1:36 112

Date created: February 17, 2018



2009 SA Atlas of Climatology and Agrohydrology (SAAtlas) by the Department of Agriculture, Forestry and Fisheries (DFF). Esri, HERE, DeLorme, MapmyIndia, © OpenStreetMap contributors, and the GIS User Community

- *Amyryllis belladonna*
- *Antiospermun* sp.
- *Arctotis acaulis*
- *Arctotis calendula*
- *Asparagus capensis*
- *Athanasia trifurcata*
- *Babiana angustifolia*
- *Babiana villosa*
- *Bobartia rufa*
- *Chaenostoma revolutum*
- *Chasmanthe dacetii*
- *Chasmanthus folribunda*
- *Cissampelos capensis*
- *Diospyros glabra*
- *Dodonea viscosa* var. *angustifolia*
- *Ehrharta calycina*
- *Ehrharta villosa*
- *Elytropappus rhinocerotis*
- *Eragrostis capensis*
- *Euryops thunbergii*
- *Felicia fillifolia*
- *Gymnosporia buxifolia*
- *Heterolepis aliena*
- *Hymenolepis parviflora*
- *Maytenus acuminata*
- *Maytenus oleoides* (lepelhout)
- *Melianthus major*
- *Merxmuellera stricta*
- *Metalasia muricata*
- *Salvia chamelaeagnea*
- *Searsia angustifolia*
- *Searsia undulata*
- *Stachys aethiopica*
- *Themeda triandra*
- *Tribolium uniolae*
- *Watsonia merginata*
- *Zantedeschia aethiopica*

Things that will need to change

- General perspective of veld
- Plant availability
- “New” way of gardening
 - * Design
 - *Maintenance



INTABA

we restore nature

www.greenintaba.co.za

Johann van Biljon

072 734 7287

johann@greenintaba.co.za