

PAWs Project Mural 2022

Pathways to water resilient South African cities (PAWS)



Fulham Road, Mitchell's Plain



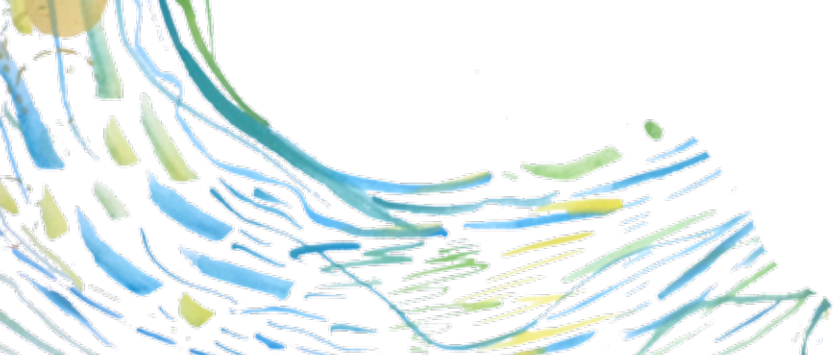
Care Creative



Amava
OLUNTU



Site Visit: understanding the pond & its surroundings



Painting the undercoat: Eco-friendly Wall paint



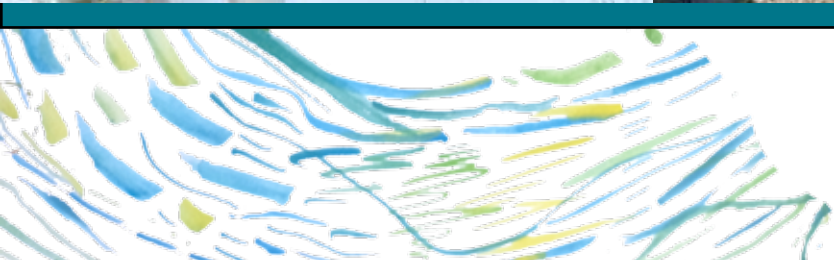
Greeting the Land & Water



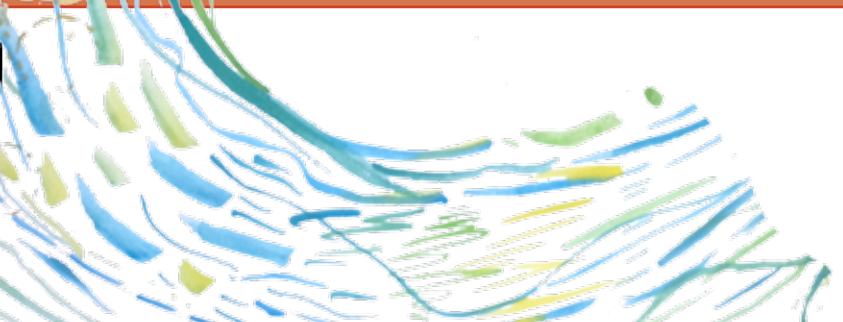
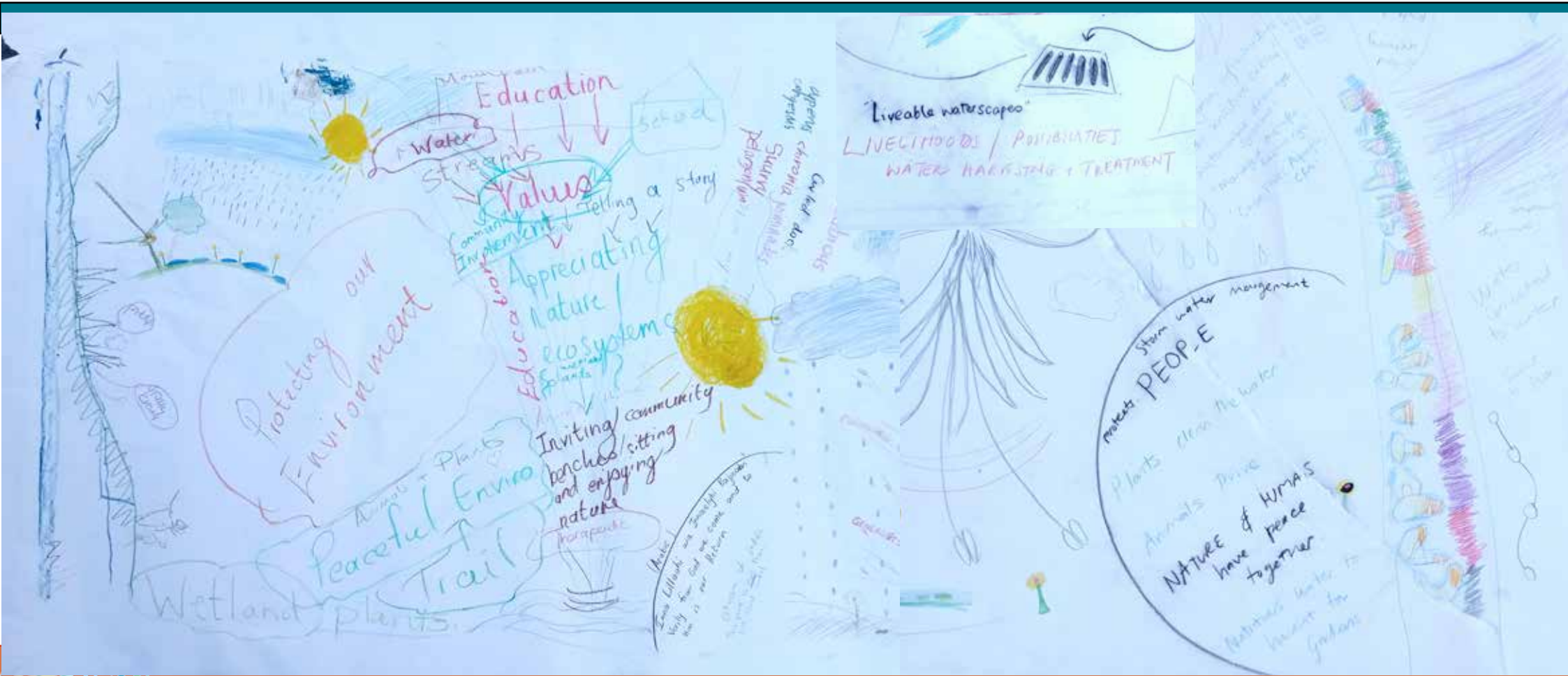


Noticing the plants and creatures

Community Workshop 7 May 2022: Participants including: Teachers from the adjacent school, Community members, researchers, engineers, landscape architect, artists and neighbors whose walls would be painted.

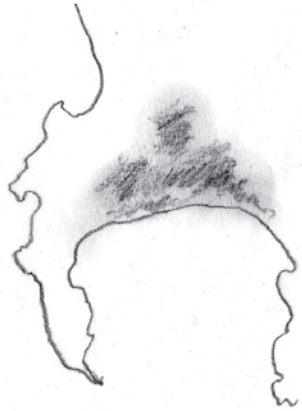


Mural Ideas & conversations



Layers of the Mural Design: Main Elements

Nature: Plants, insects, animals
= Biodiversity



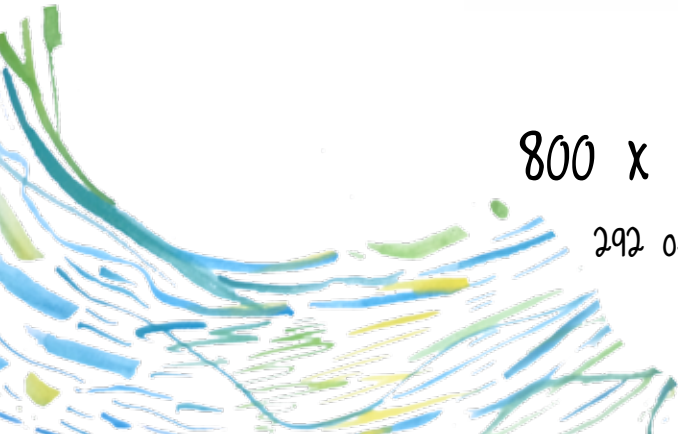
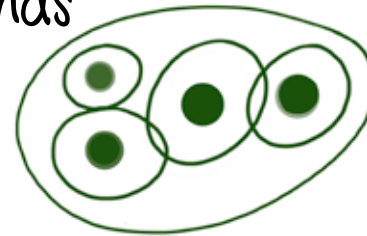
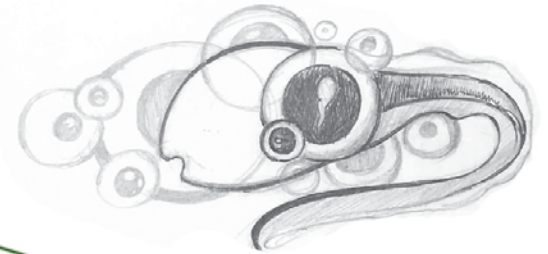
Explaining: Cape Flats Aquifer, source to sea cycle

CAPE FLATS AQUIFER

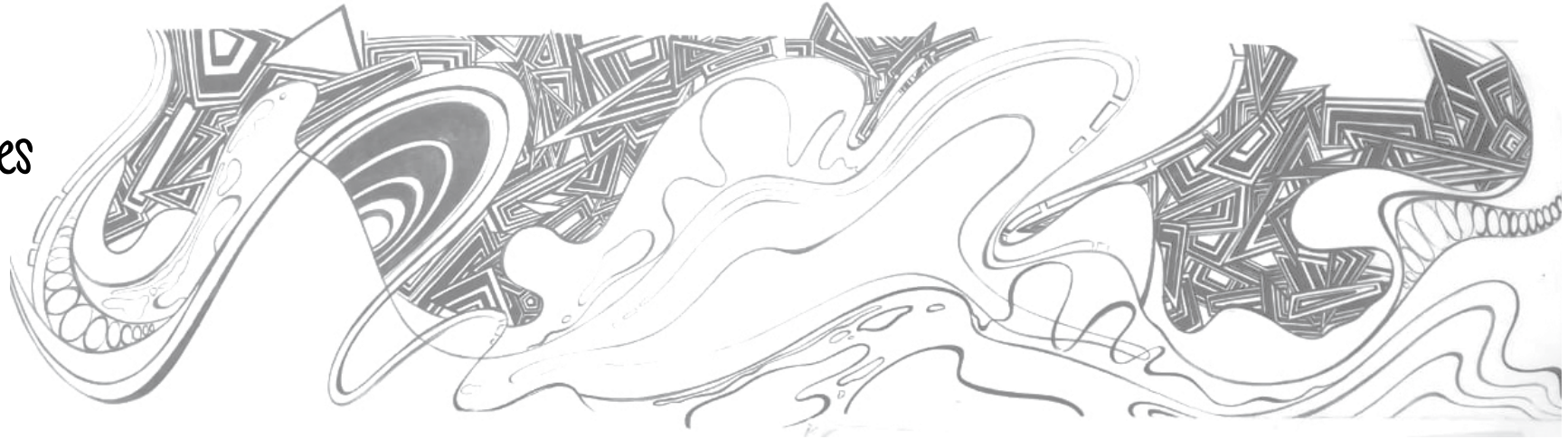


800 x potentially connected ponds

292 of them sit over the Cape Flats Aquifer

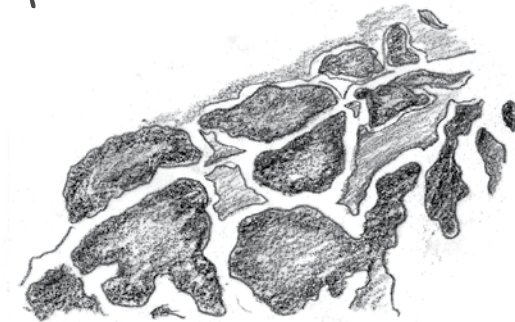


Water Flow lines



"Let the stormwater speak"

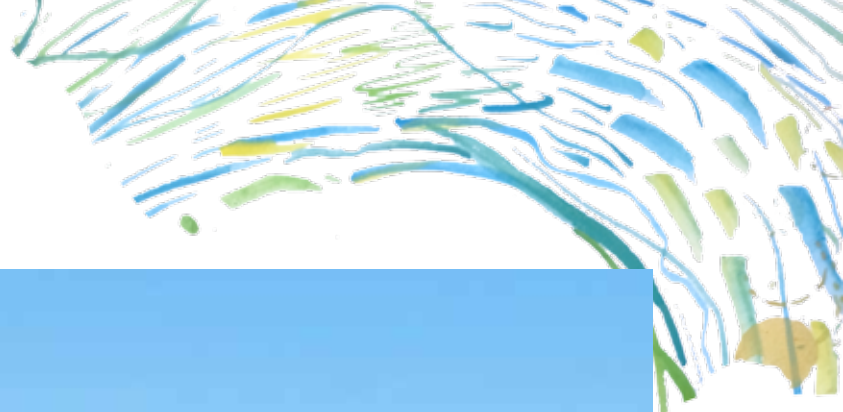
The significance of the Western Leopard Toad



Positive impacts



Mural Design



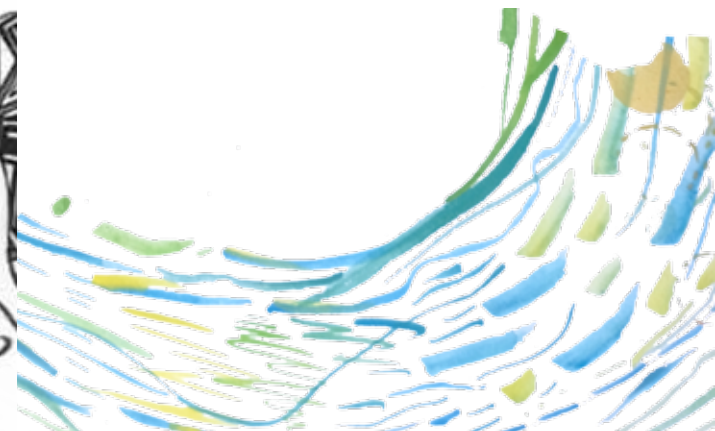
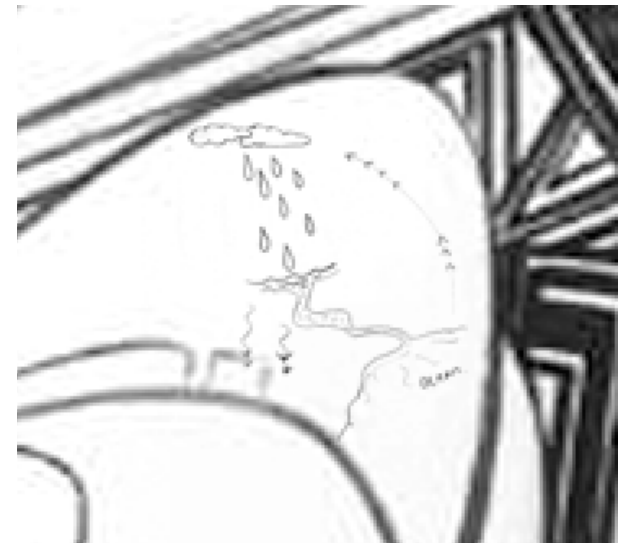
Mural Design

The water flow lines will be the Outlines for our educational 'comic book'.

Inside these lines or holding shapes will be different significant bits of information for example:
What is an aquifer? or how water systems connect.

The 'Comic book' unfolds accross the wall, taking the viewer on a journey of exploration and learning...

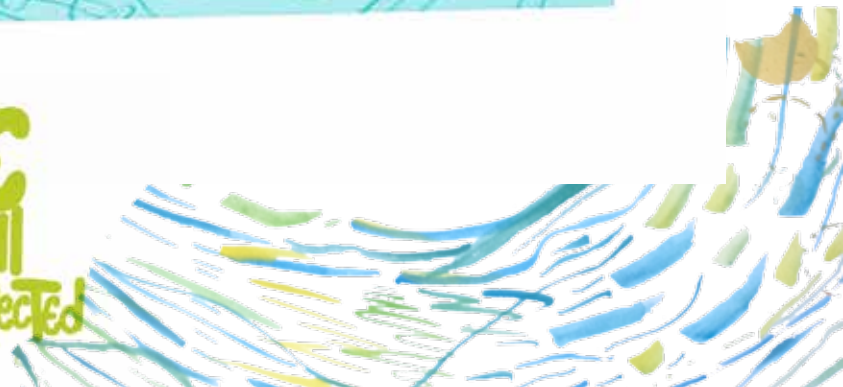
eg. An explanation of the word 'Pollination' inside a shape:
Repeated in different languages.

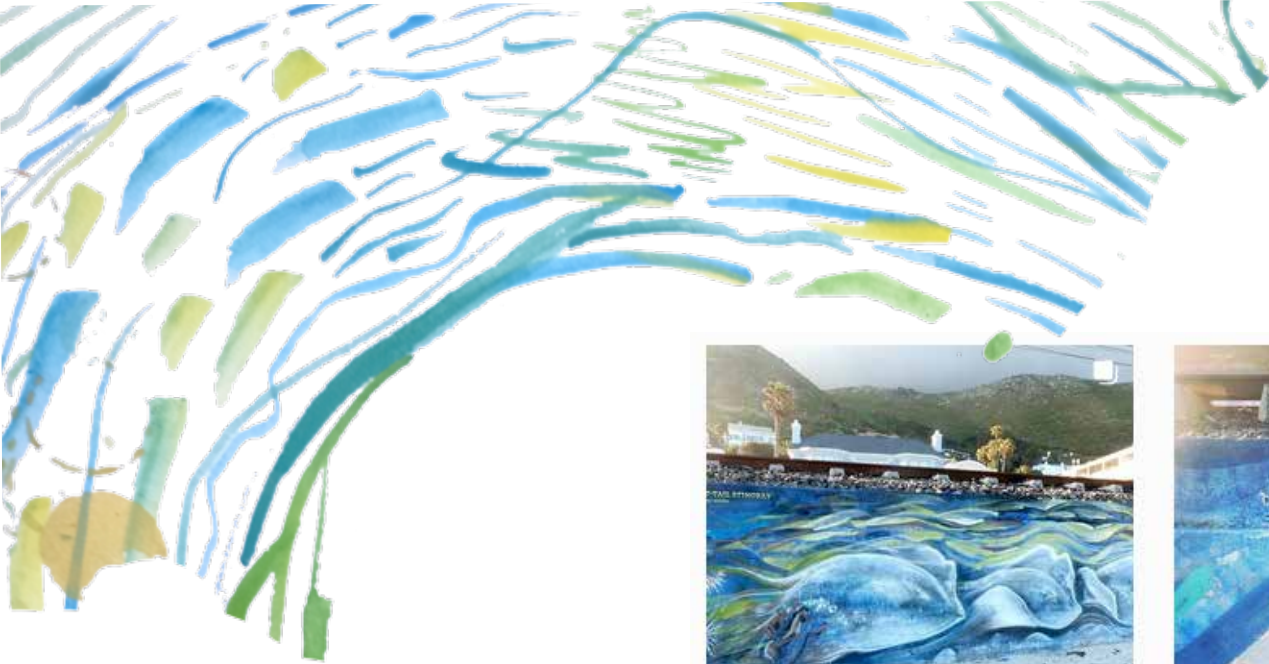


Mural Design



WE
ARE ALL
CONNECTED





Dalebrook Beach, Kalk Bay. HC360Crew. Nov'21

@carecreative__

www.amava.org/partners/carecreative/